

Chapter I

Introduction

1.1 BackGround

The urban landscape is an important aspect that functions to represent social values and standing of a city in a physical form. Therefore a historical urban landscape is an essential aspect to every city. Besides functioning as a tourist destination, a historical urban landscape also acts also as a tangible evidence of the identity, history, and also its development process of a city.

Most cities in Indonesia still gives little attention and care towards the conservation of its historical urban landscape. Outside cities like Jakarta or Jogjakarta most government official still see little in the benefits and importance of its older urban landscape, causing most cities in Indonesia to lose its distinguishing features and identity. Even though there are examples in cities outside of Indonesia that show this, such as Penang's Georgetown or Hanoi.

One of the cities in Indonesia that suffers loss of historical urban landscape is Manado. Currently little attention has been given to the city's historical landscape, Even though both in the aspect of historical urban planning and national history the city holds a significant value.

In the current state, the historical area of Manado acts shopping district. In which the locals perceived as a seedy old out-dated shopping district that is only active in the day while being a crime ridden area in the night. A big contributing factor towards this perception is the under-regulated renovations and buildings. Other smaller factors to conclude are the annual flooding, traffic Jams, and the fact that malls and other more physical types of commerce is being beaten by online shops and other newer form of e commerce.

On the other side there had been growing interest in tourism as an income by the government as well as more data showing the rise of tourist in the city, signifying there is interest in people to explore the town's identity. So to the appropriate

response is to propose conservation project on the area, but to do so we need to answer what kind of approach do we use and how viable is it.

1.2 Research Questions

1. What is the most feasible approach to conserve key elements of the historical urban landscape of Manado?
2. Which key elements and period of the city holds significant value to be conserve?
3. What objects and fenomenan in the urban landscapes that affect the conservation?

1.3 Research objectives

1. Identify developments and changes in the spirit and image of the historical district , starting from the colonial era until the present day
2. Analyze key elements that best represent the image of the historical district as well as the functions of the key elements
3. Survey and Analyze the current conditions of the key elements that represent the image of the historical district
4. Determine treatment and conservation approach that fits with the current condition of the key elements

1.4 Research Purpose

To revitalize the area of “*Pusat Kota*” using a historical approach to site design

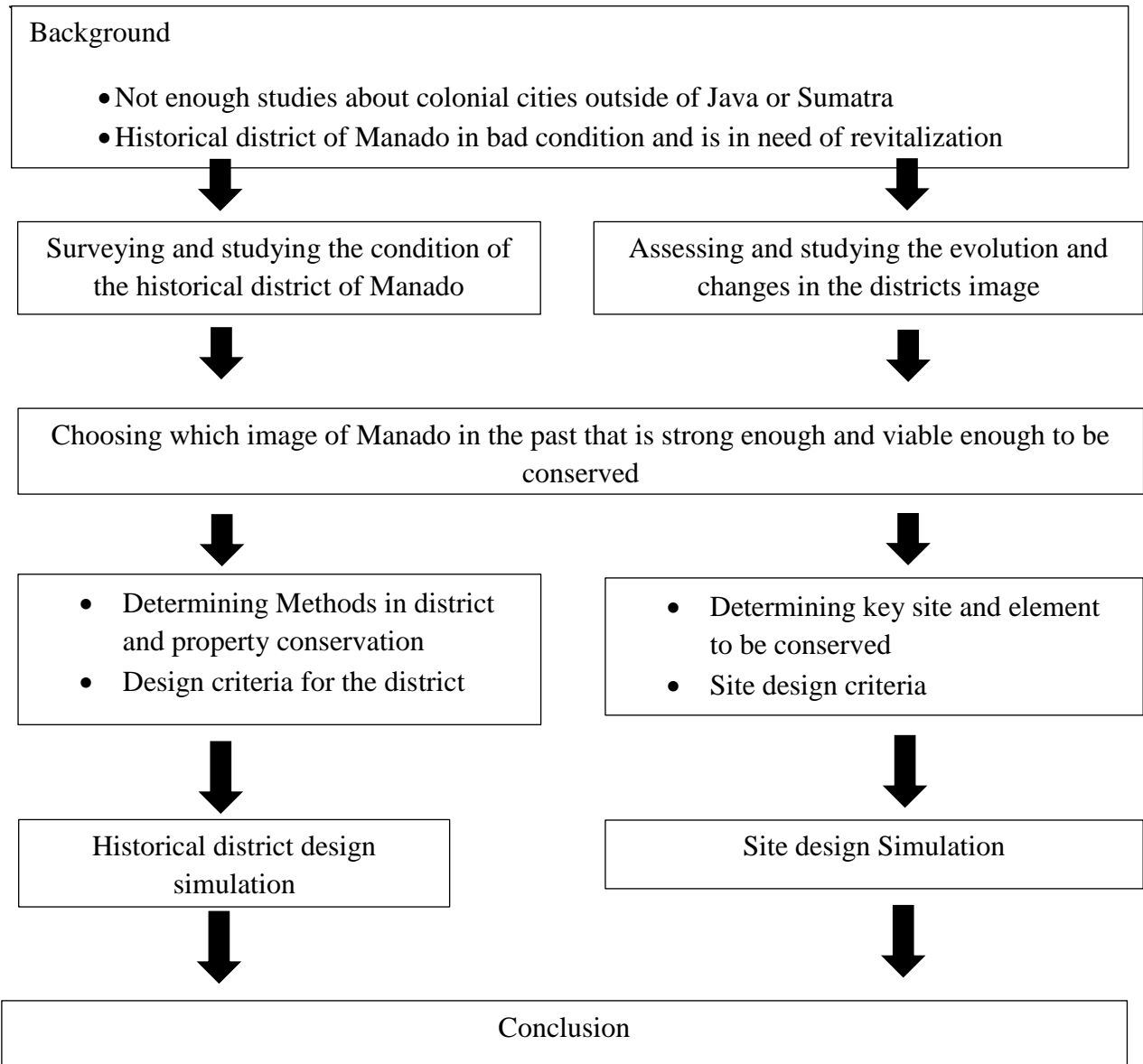
1.5 Scope of Research

The scope of the research will in cover the subject of Indonesia history starting from the 1600’s which is the start of the colonial period until the 1960’s which is the period of transition from the East indies to the forming of Indonesia, the development of urban planning in Indonesia through the ages, Conservation methods, as well as studies about spirit of a place and image of a city.

1.6 Method of Research

The method used in this research is of the qualitative type, called historical research. The technique of this method involves the study of the past in hopes to interpret the facts and events and their impacts on the present events. This method will involve the use of interviews with qualified individuals who understand or experienced the historical events, reviewing literatur, documents and recordings discussing the event or subject

1.7 Form of Thinking



1.8 System of Study

This research is divided in to 6 chapters, this chapters are:

- **Chapter one, Introduction**

Background information and context of the research

- **Chapter two, Literature Review**

Theories and literature that would be relevant towards the research

- **Chapter three, Research Methodology**

A detailed explanation of the methods used in the research

- **Chapter four Discussion**

A process of data analization and reported findings that would later be outputed in the form of a design criteria

- **Chapter five, Design Simulation**

Discusions on design process based on the design criteria

- **Chapter six, Conclusion and Closing notes**

Final notes and comments about the research